



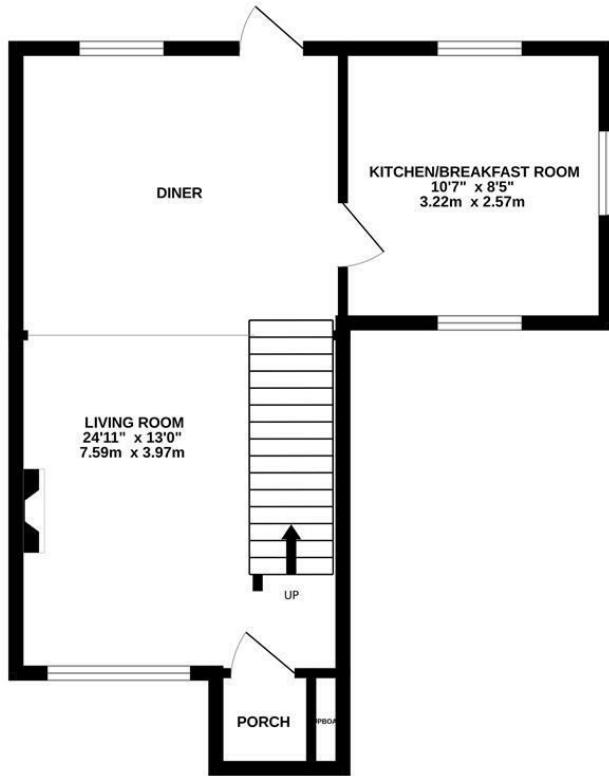
111 The Dormers, Swindon, SN6 7PE

Price guide £235,000

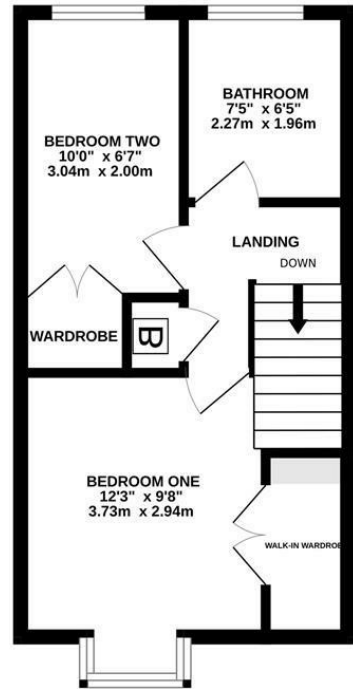
NO ONWARD CHAIN!!! Resides Swindon are delighted to be marketing this spacious two bedroom end terrace property located in the popular location of 'Highworth'. The accommodation comprises, entrance porch, large open plan living room/dining room, good size kitchen/breakfast. To the first floor houses two bedrooms with built in wardrobes and the family bathroom with a shower. To the rear is a garden with patio area and shed. EARLY VIEWINGS A MUST.!

Floor Plan

GROUND FLOOR
439 sq.ft. (40.8 sq.m.) approx.



1ST FLOOR
320 sq.ft. (29.7 sq.m.) approx.



TOTAL FLOOR AREA: 759 sq.ft. (70.5 sq.m.) approx.

Whilst every attempt has been made to ensure the accuracy of the floorplan contained here, measurements of doors, windows, rooms and any other items are approximate and no responsibility is taken for any error, omission or mis-statement. This plan is for illustrative purposes only and should be used as such by any prospective purchaser. The services, systems and appliances shown have not been tested and no guarantee as to their operability or efficiency can be given.
Made with Metropix ©2025.

Area Map



Energy Efficiency Graph

Energy Efficiency Rating		Current	Potential
Very energy efficient - lower running costs			
(92 plus) A			
(81-91) B			
(69-80) C		69	78
(55-68) D			
(39-54) E			
(21-38) F			
(1-20) G			
Not energy efficient - higher running costs			
England & Wales		EU Directive 2002/91/EC	
Environmental Impact (CO ₂) Rating		Current	Potential
Very environmentally friendly - lower CO ₂ emissions			
(92 plus) A			
(81-91) B			
(69-80) C		72	78
(55-68) D			
(39-54) E			
(21-38) F			
(1-20) G			
Not environmentally friendly - higher CO ₂ emissions			
England & Wales		EU Directive 2002/91/EC	

These particulars, whilst believed to be accurate are set out as a general outline only for guidance and do not constitute any part of an offer or contract. Intending purchasers should not rely on them as statements of representation of fact, but must satisfy themselves by inspection or otherwise as to their accuracy. No person in this firm's employment has the authority to make or give any representation or warranty in respect of the property.